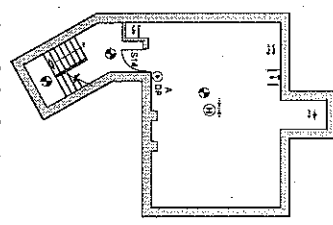
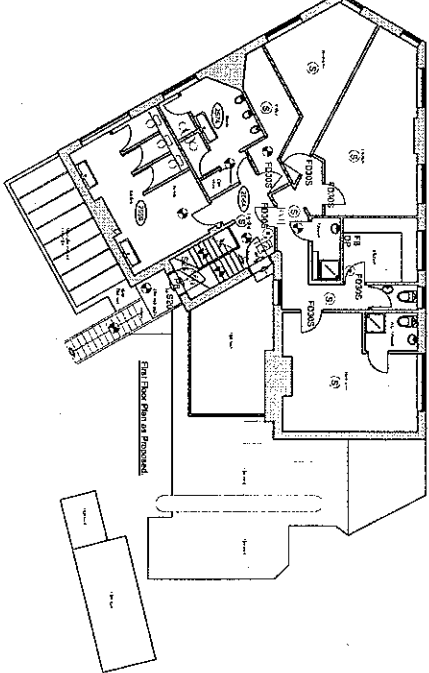
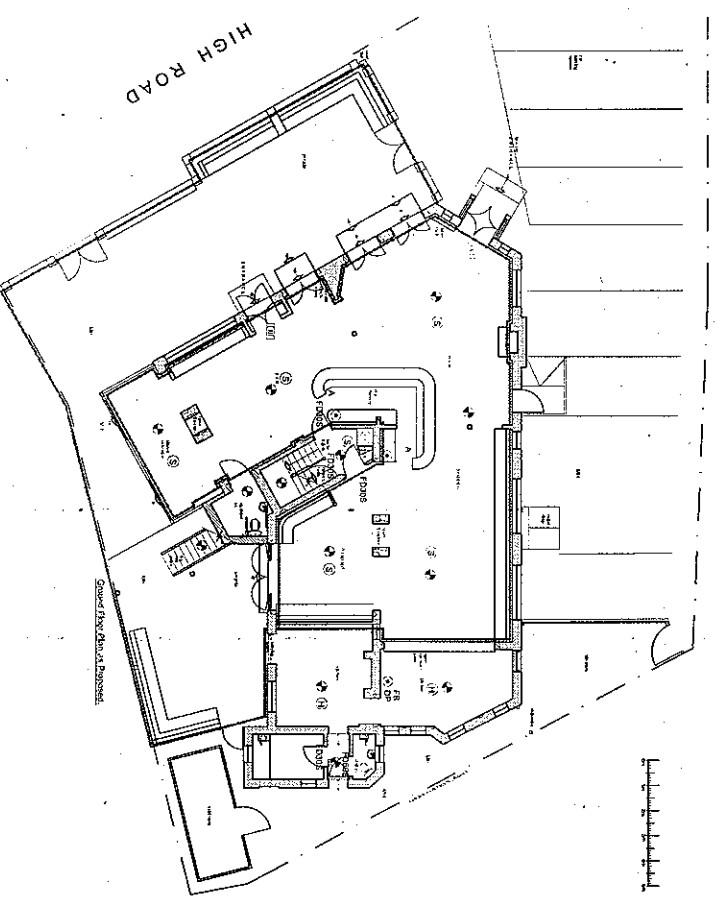


LEGEND	
————	LICENCED AREA DEUSE LINE
⚡	UNMANNED EMERGENCY LIFTWAY
III	EMERGENCY EXIT SIGN
⊙	SMOKE DETECTOR
④	HEAT DETECTOR
Ⓜ	VISIBIL PANELED IN DOOR (FIRE BARRIERS IN DOORS)
PA	PUSH BAR TO BURSTPROOF EXIT DOORS
ⓐ	BREAK GLASS FIRE ALARM CALL POINT
A	AFFF MULTI PURPOSE FINE FOAM EXTINGUISHER
DP	EXTINGUISHER
FR	FIRE BLANKET
3M	FIRE DOOR KEYS LOCKED SHUT SIGN
EM	FIRE EXIT KEYS LOCKED SHUT SIGN
ES	PUSH BAR TO OPEN SIGN
EMEM	1 HOUR FIRE RESISTANT DOOR WITH INVERTED SMOKE SENSITIVE AND SELF-CLOSING DEVICE
EMEM	1 HOUR FIRE RESISTANT DOOR WITH INVERTED SMOKE SENSITIVE AND SELF-CLOSING DEVICE

GENERAL NOTES:

- Ground lighting emergency lighting installation to serve all public areas, lobby, corridors, all areas and private car parks, including liftwells, stairs, escape routes, Escalator, Liftwells, and Stairs, in accordance with BS 5266-1, BS 5266-2, Building Control and Fire Officer approval.
- Erected ceiling fire alarm system throughout, including, break glass fire alarm call points, alarm bell sounders to be installed in pairs of ceiling, near and remote to each other in all rooms, and in the liftwells, in accordance with Part 1 to meet Building Control and the Officers approval.
- AFFF type fire extinguishers to 201 capacity and the laboratory (name) type fire extinguisher to commercial kitchen.
- All liftwells, lift shafts and 201 capacity lift to be the equivalent of fire protection in accordance with the requirements of BS 5834:2002.
- Lift and fire door shall be marked 'Openly and Clearly' in accordance with BS 5834:2002.
- Access to escape to comply with Building Control / Fire Officer approval.
- All doors marked 'FD30S' to be 1 hour minimum fire resistance, in accordance with BS 476 Part 1, and minimum 450mm steps and self closing device, any glazing to be 1 hour minimum standard.
- Fire signs and notices as required by Building Control / Fire Officer.
- Checkpoints visit every 1 hour for refilling standard.
- Check / signposts existing cables between lift basement shaft and ground floor landing areas, and lift floor landing areas and second floor accommodation.
- Electrical power/fighting details upgraded to current IEE regulations with NSCI to standard.



© 2011 Fox & Gaese, Ltd. All rights reserved. This drawing is the property of Fox & Gaese, Ltd. and is not to be reproduced or transmitted in any form or by any means, electronic, mechanical, photocopying, recording, or by any information storage and retrieval system, without prior written permission of Fox & Gaese, Ltd. The copyright in this drawing is vested in Fox & Gaese, Ltd. and the copyright in any design or patentable invention contained therein is vested in Fox & Gaese, Ltd. All rights reserved.

360 International
 DISCOVER I DESIGN I DELIVER
 565 Moss Street, Stroudham Park, London, E1W 1UG
 Tel: 020 2717 7248 www.360international.com

Jas Gawronski
 Fox & Gaese
 16 High Road
 Ickenham, UB10 8LJ

Prepared by
 Drawn by
 Email: j.gawronski@foxandgaese.com
 Email: j.gawronski@foxandgaese.com
 Tel: 020 2717 7248
 Fax: 020 2717 7248

File No:	905/13
Date:	5 Dec 2016
Drawn by:	SDAC
Checked by:	SDAC
Project:	Premises License
Client:	1:100@A1
Scale:	1:100@A1